

**T&T MARINE**

**D/B BIG-T**

**Setting legs on MODU with jib**



# D/B BIG-T

## BARGE PARTICULARS

LENGTH 185'  
 WIDTH 68'  
 DEPTH 13'6"  
 OPERATING DRAFT 5'

## DERRICK PARTICULARS

WINCH SKAGIT MD-97  
 MAIN BOOM LENGTH 150 FEET  
 CAPACITY MAIN 550 TONS  
 JIB LENGTH 40 FEET  
 CAPACITY JIB 200 TONS  
 PARTS OF LINE

BOOM 21 x 1 3/4"  
 MAIN 20 x 1 3/4"  
 JIB 12 x 1 1/2"

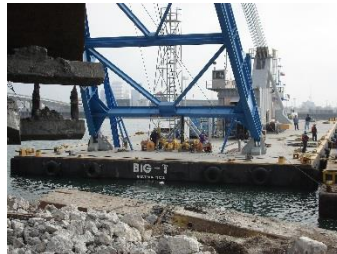
MAIN GENERATOR 300Kw  
 STANDBY GENERATOR 30Kw  
 AIR COMPRESSOR 375 CFM  
 BALLAST PUMPS 2 x 4"  
 DECK WINCHES 4  
 AIR TUGGERS 2 x 10,000 Lb  
 2 x 8,000 Lb  
 2 x 4,000 Lb



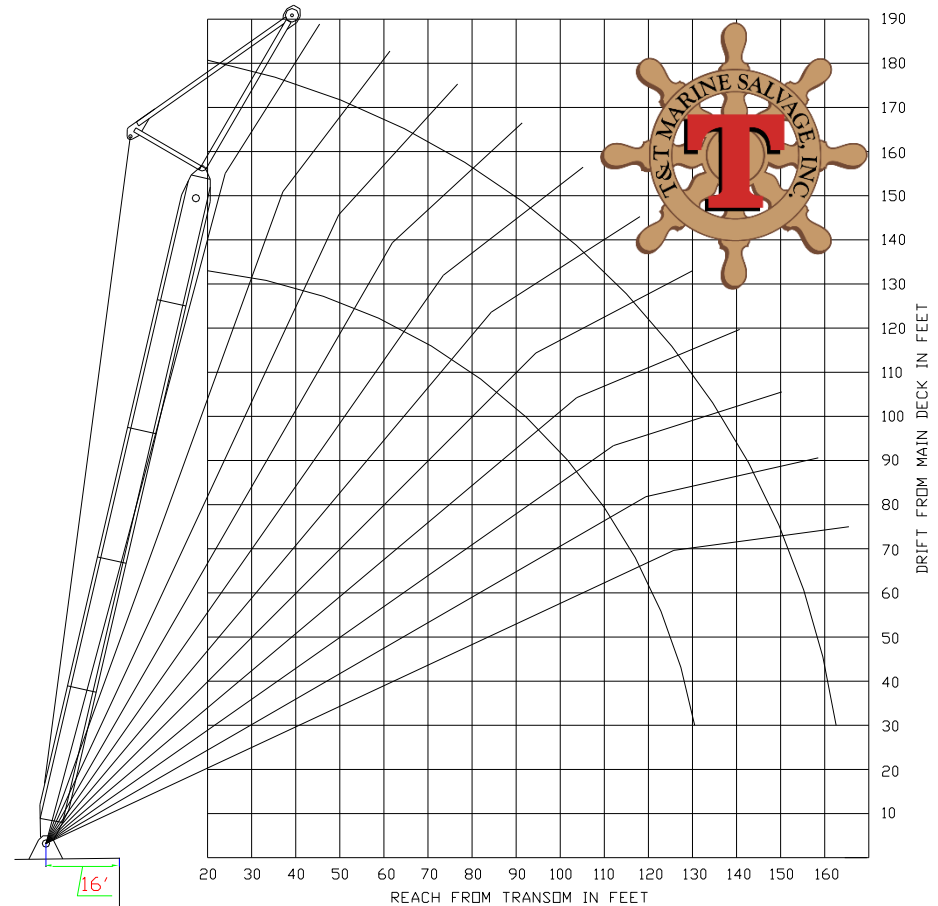
Setting Leg Sections



Lifting 550 Ton Cradles From 90' Of Water



Setting 450 Ton Dock Section Removed From Channel To Bank At 75' Radius



<u>Main Boom</u>				<u>Jib @ 10°Offset</u>			<u>Combined Main and Jib</u>	
Radius	Drift	Capacity	Capacity	Radius	Drift	Capacity	Capacity	Capacity
Feet	Feet	W/O Jib	W/Jib	Feet	Feet	S.T.	Main	Jib
20	133	550	500	41	175	300	300	200
30	131	550	500	52	171	300	300	200
40	129	550	500	64	165	300	300	200
50	127	550	500	77	158	300	300	200
60	122	500	450	89	150	275	250	200
70	117	450	400	101	141	200	200	200
80	109	400	350	113	130	200	175	175
90	101	310	260	125	116	200	130	130
100	90	220	170	136	100	170	85	85
110	75	175	125	147	79	125	62	62
120	60	120	70	159	46	70	35	35

## T&T MARINE SALVAGE, INC.

9723 Teichman Road

Galveston, Texas 77554

Phone: +1 (409) 744-1222 • Fax: +1 (409) 744-5218

[www.teichmangroup.com](http://www.teichmangroup.com)

[info@teichmangroup.com](mailto:info@teichmangroup.com)

CAPACITIES ARE IN SHORT TONS  
 SPECIFICATIONS ARE SUBJECT TO CHANGE WITHOUT NOTICE